

Closet Connector Housing (CCH) Four rack units, holds 12 CCH connector panels

CORNING

Part Number: CCH-04U

Closet connector housings (CCHs) provide interconnect or cross-connect capabilities between outside plant, riser or distribution cables and opto-electronics. Like other LANscape solutions hardware, the housings accept CCH connector panels. In addition, the housings accept CCH cassettes and CCH modules.

From fiber and cable routing and strain relief, to port labeling and termination, these housings reduce the risk of error that can disrupt networks. The units are designed for rack mounting in 19-in (48 cm) racks or optional 23-in (58 cm) equipment racks (1.75-in EIA hole spacing). They are available in rack space options of 1U (two panels, cassettes or modules), 2U (four panels, cassettes or modules), 3U (six panels, cassettes or modules) and 4U (12 panels, cassettes or modules). The 1U, 2U and 3U options feature a slide-out tray and see-through, removable top covers. The CCH-04U features a clear door, removable front and rear enclosures and a platinum-colored interior for maximum visibility and access.

Every CCH housing is shipped complete with strain relief brackets, routing clips and guides, and mounting brackets for proper installation. Documentation labels are provided and components can be added as needed to construct a fiber distribution frame for any application. All housings include a removable tinted polycarbonate front door.

Features and Benefits

Durable, polycarbonate-tinted front door for viewing jumpers

Ideal for pigtail splicing

Removable, translucent top covers (1U, 2U, 3U), rear cover (4U)

Visibility and ease of access for installation, testing, and troubleshooting

Internal and external strain-relief options

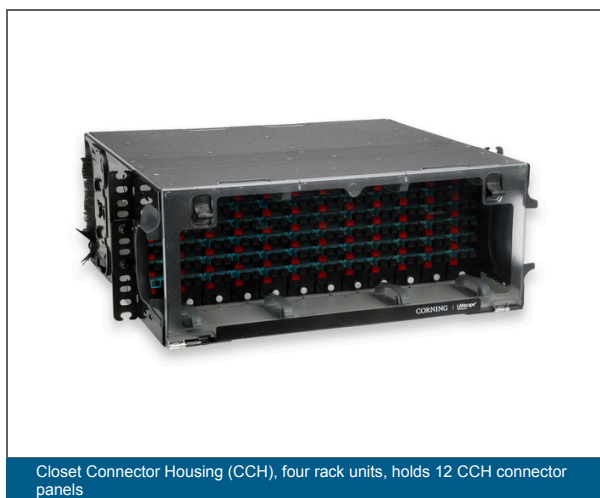
Flexibility for installation and moves, adds, and changes (MACs)

Accepts panels, modules, and cassettes

Variety of field-termination options

Adaptable to use as a modular splice housing

Splices are stored and protected in same footprint



Closet Connector Housing (CCH), four rack units, holds 12 CCH connector panels

Closet Connector Housing (CCH) Four rack units, holds 12 CCH connector panels



Specifications

General Specifications

Product Type	Housings
Environment	Indoor
Access Type	Front and rear access slidable
Mounting Type	Rack-mount, Cabinet-mount
Application	Carrier Networks, Data Center, Enterprise Networks

Standards

RoHS	Free of hazardous substances according to RoHS 2011/65/EU
Approvals and Listings	Meets ANSI/TIA/EIA-568A and 606, Tested in accordance with Telecordia GR-63-CORE, UL1863 - Communication Circuit Accessories
UL-Listed	United States and Canadian safety standards

Environmental Conditions

Temperature Range, Operation	-40 °C to 70 °C (-40 °F to 158 °F)
------------------------------	-------------------------------------

Design

Lockable	Yes
Number of Modules	12
Number of Panels/Cassettes per Housing	12
Housing Type	CCH
Housing Color	Black
Panel or Cassette Type	CCH
Panel or Module Type	CCH
Splice Tray Options	CCH Pigtailed Splice Cassette (CCH-CS)
Fiber Capacity	288
Lock Position	Front or rear

Closet Connector Housing (CCH) Four rack units, holds 12 CCH connector panels



Dimensions	
Height	178 mm
Width	483 mm
Depth	433 mm

Ordering Information	
Product Number	CCH-04U
Height Unit	4 U
Package Contents	Closet Connector Housing 4U, 12 blank panels, Installation kit with mouting screws, Internal and external strain relief brackets, Label Cards
Shipping Weight	7.5 kg
Shipping Height	257 mm
Shipping Width	532 mm
Shipping Depth	513 mm
Units per Delivery	1/1



Corning Optical Communications LLC • 4200 Corning Place • Charlotte, NC • 28216 • United States
800-743-2675 • FAX: 828-325-5060 • International: +1-828-901-5000 • www.corning.com/opcomm

A complete listing of the trademarks of Corning Optical Communications is available at www.corning.com/opcomm/emea/trademarks. Corning Optical Communications is ISO 9001 and ISO 14001 certified. © 2026 Corning Optical Communications. All rights reserved.